



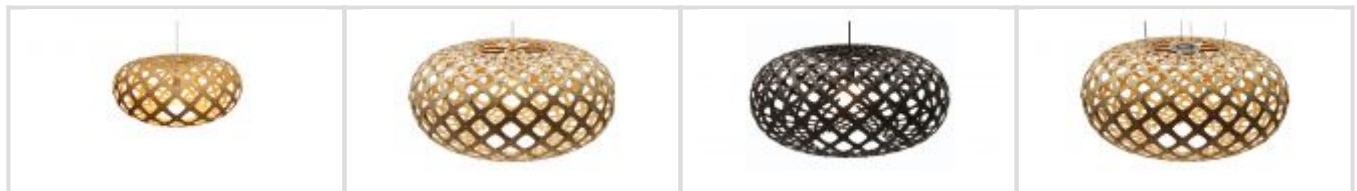
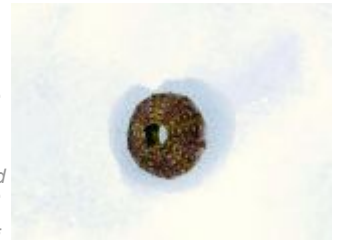
## DETAILS

Grow Family  
Seed System kitset lightshade  
4 Sizes  
1400 size made from hoop pine  
Construct your kitset by following  
our [instructional video](#)



## STORY

"Kina is the Maori name for the local sea-urchin. Under the spines the shell is shaped like this with similar surface patterns. I saw this tiny one in Antarctica, sunk in the sea ice in a hollow that was made when the shell absorbed the warmth from the sun and melted the ice around it – an exquisite jewel. Our kitsets significantly reduce freighting, which is one of our ways of doing what we can to help preserve our beautiful sea and land environments." - David Trubridge



### KINA 440

Bamboo Plywood with Nylon Clips  
E14 bulb holder & 2m of electrical  
cord  
Generally held in stock

### KINA 800

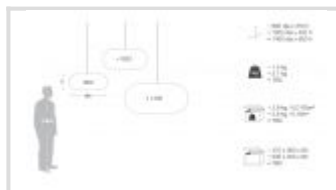
Bamboo Plywood with Nylon Clips  
E27 bulb holder & 2m of electrical  
cord  
Generally held in stock

### KINA 800 BLACK

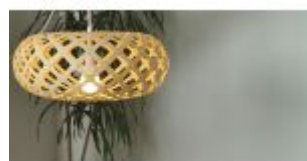
Stained Bamboo Plywood with Nylon  
Clips  
E27 bulb holder & 2m of black  
electrical cord  
Generally held in stock

### KINA 1400

Bamboo Plywood with Nylon Clips  
LED bulb & 2m of electrical cord



KINA LINE DRAWING



KINA INSITU



UNPACKED KINA